

 **MONSTER®**

**3-SPEED
TURNTABLE**



MODEL: MT-TT02

User Manual



Welcome

Premium connectivity that fuels modern lifestyle and empowers innovation.

A better everyday experience through amazing products.

The user manual will provide everything you need to know about using your new product.

All our products are produced and tested to stringent standards of performance and safety, and are pleased to provide a 2 Year Warranty with your purchase.

We hope you enjoy your purchase.



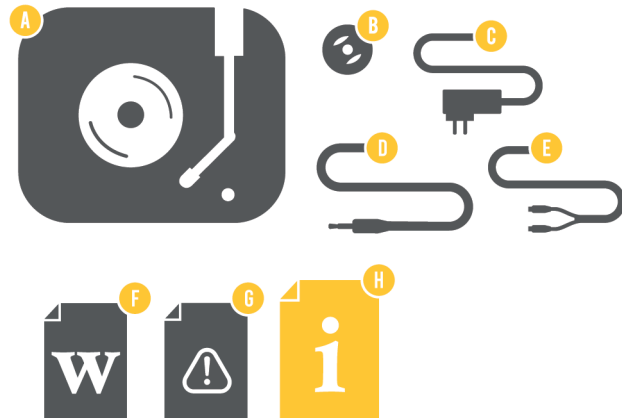
Contents

Welcome	2
Product Overview	4
Controls and Connections	8
Operation	10
Bluetooth	12
Troubleshooting	13
Specifications	14
Compliance and Responsible Disposal	15

Product Overview

What's in the box:

- A. 3-Speed Turntable
- B. Adaptor for 45RPM records
- C. AC Adaptor
- D. 3.5mm to RCA Audio Cable
- E. RCA Audio Cable
- F. Warranty Certificate
- G. General Safety Warnings
- H. User Manual



Important Tips

- Place the turntable on a level surface.
- Place the turntable away from any source that may generate heat or vibrations.
- Make sure there is enough space around the turntable for airflow. Leave at least 10cm clearance around the product.
- Unplug the turntable before cleaning it.
- Clean using a dry cloth only - do not use water or chemicals.
- Only use the provided power supply.
- Keep liquid, children and pets away from the turntable at all times.
- Repack in its original packaging when transporting the turntable.

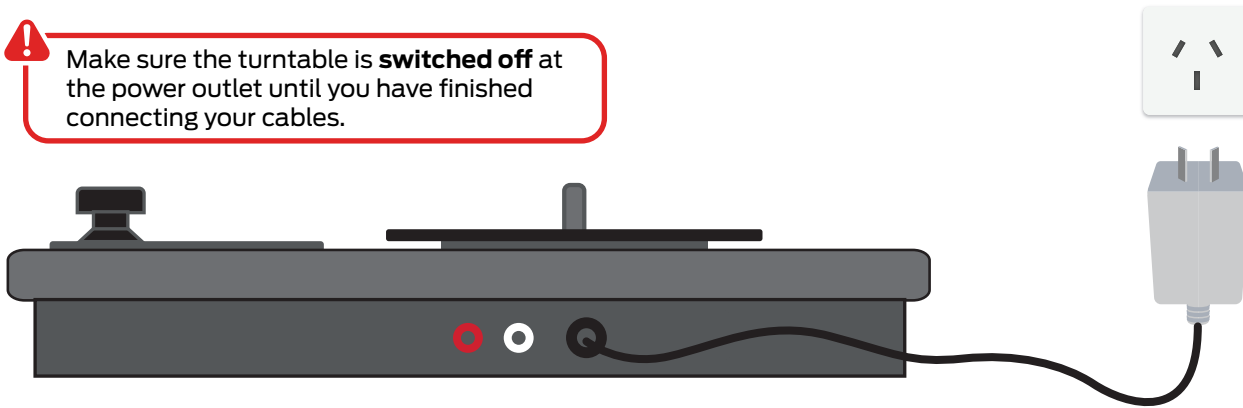


Before first use

- Unpack the product but keep all packaging materials until you have made sure your new product is undamaged and in good working order. Plastic wrapping can be a suffocation hazard for babies and young children, so ensure all packaging materials are out of their reach.
- Unwind the cord to its full length and inspect it for damage. Do not use the product if the product or its cord have been damaged or are not working properly. In case of damage, contact our after sales support line for advice on examination or repair or return of the damaged product.
- Read this manual to familiarise yourself with all the parts and operating principles of the product.
- Do not connect the unit to the mains power socket before checking the mains voltage and before all other connections have been made.

Connect to power

⚠ Make sure the turntable is **switched off** at the power outlet until you have finished connecting your cables.

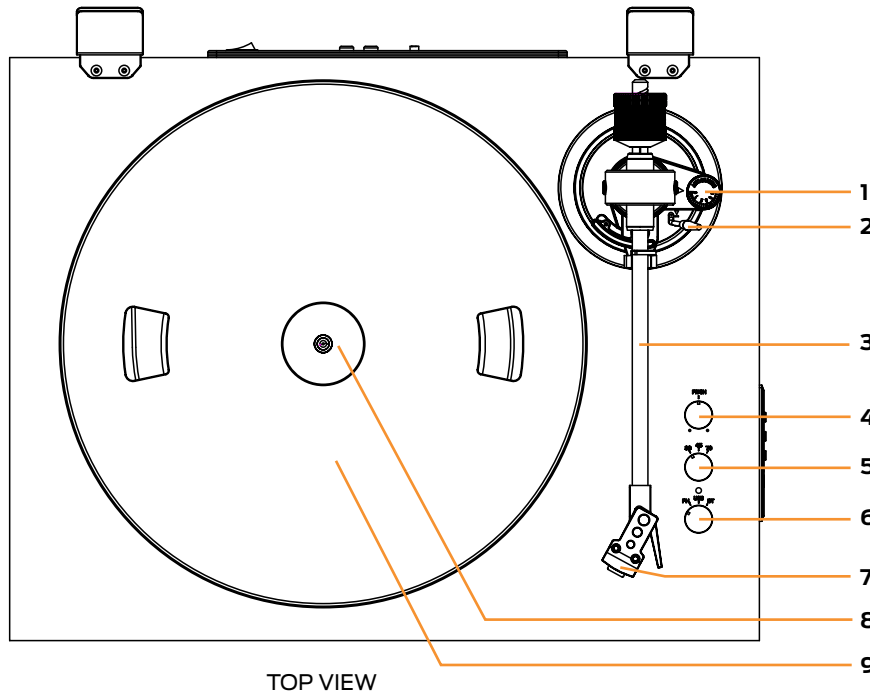


- Connect the DC plug into the DC IN power jack of the turntable.
- Plug in the adaptor into the AC power outlet.

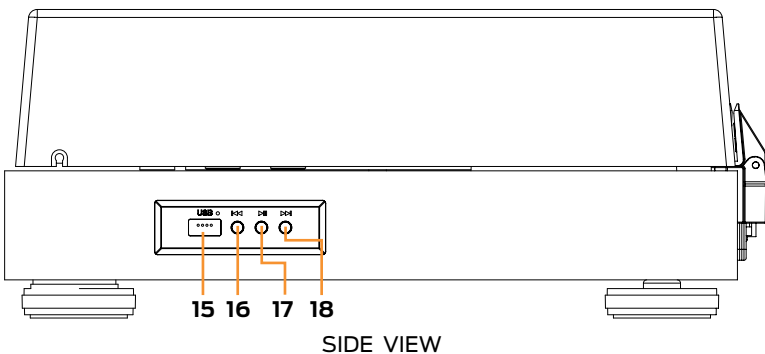
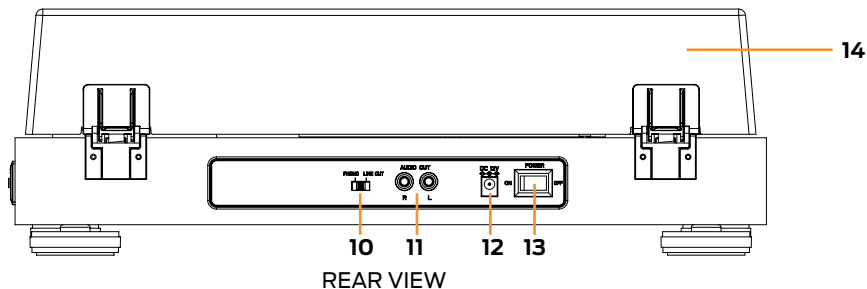
💡 Don't forget to plug in the turntable to the power outlet. Leave the power switched off until installation is finished.

Controls and Connections

Product Overview



1. Anti-skating - slightly rotate to adjust
2. Lift lever
3. Tone arm
4. Pitch control knob
5. Speed control knob
6. Mode knob - adjust to switch between Phono, USB and Bluetooth mode
7. Stylus
8. Turntable shaft
9. Turntable platter



10. Phono/Line Out output - select between phono or line out output
11. RCA output - use the supplied 3.5mm to RCA audio cable to connect to your external speakers (not included) for audio playback
12. DC port - use the supplied AC adaptor to connect to the DC port and the other end to a power source
13. On/Off switch
14. Acrylic dust cover
15. USB port
16. ⏮ button: press to play previous song
17. ⏸ button: press to play/pause song
18. ⏭ button: press to play next song



Operation

Power On and Mode selection

- Flick the On/Off switch to turn the turntable on.
- Once you place the tonearm on the vinyl, the turntable will switch to vinyl mode and Bluetooth® mode will automatically be disabled. Place the tonearm back to the arm rest to switch back to Bluetooth® mode. When the tonearm is back in the arm rest, use the Mode knob to switch between Phono, USB and Bluetooth mode.

Playing a Record

- Place a record on the turntable platter and select the correct playing speed: 33, 45, 78 RPM (according to the vinyl being played).
- Remove the stylus guard and unlock the tone arm lock. Push the lift lever upward to raise the tone arm and then gently move the tone arm to the desired position over the record. The platter will begin to spin when the tone arm is moved toward the record.
- Push the lift lever forward to lower the tone arm slowly onto the desired position on the record and begin playing the record.
- When you have finished playing the record, push the lift lever backward to raise the tone arm and gently move it back to its rest.
- When you have finished playing records, engage the tone arm lock to protect it from accidental movement. Flick the On/Off switch to turn the turntable off. Unplug it from the power supply if you are not going to use it for a while.
- **Note:** when playing a record for the first time, you will need to remove the rubber ring on the cartridge.

To avoid damaging the stylus, ensure that the included stylus guard is in place whenever the turntable is being installed, moved or cleaned.

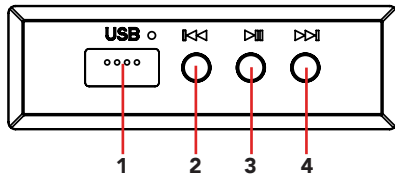


Connect to an External Amplifier using the Line Out Port

- Use the supplied 3.5mm to RCA audio cable to connect to the RCA output at the back of the turntable, and then connect to the your external amplifier.

Playing Music from USB

- The USB port on the side of the turntable allows you to play music from a USB.



1. USB port: insert your USB for music playback
2. ◀◀ : Play previous track.
3. ▶▶ : Press to play or pause.
4. ▶▶ : Play next track.

NOTE:

- If a USB has already been inserted when the unit is switched on and the Mode knob is set to USB, the music from the USB will be played automatically.

Tips to better performance

- When opening or closing the turntable cover, handle it gently, moving it either at the center or equally from both sides.
- Do not touch the stylus tip with your fingers; avoid bumping the stylus on the turntable mat or on the edge of the record.
- Clean the stylus tip frequently, using a soft brush with a back-to-front motion only.
- If you use a stylus cleaning fluid, use it very sparingly.
- Wipe the dust cover and turntable housing gently with a soft cloth. Clean the unit only with a dry, clean cloth. Do not use liquid or aerosol cleaners.
- Never apply harsh chemicals or solvents to any part of the turntable system.
- Prior to moving the turntable, always unplug it from the AC power outlet and fasten the tone arm on the tone arm rest with the vinyl twist-tie.



Bluetooth®

You can listen to tracks from a media device if connected to the unit via Bluetooth® wireless technology.

Pairing Bluetooth® Devices

- When the turntable is switched on and the tonearm is placed on the arm rest, Bluetooth® mode is automatically activated (if there is no USB plugged in).
- The first time you use your Bluetooth® device with the turntable, you will need to pair them with one another.
- Activate Bluetooth® on your compatible device, and set it to search for compatible devices.
- Select 'MT-TT02' from the list of found devices.
- If your device asks for a passkey (depending on the device manufacturers, model, and software version), then enter digits "0000" and press OK.
- You can also use the control buttons on the right side of the turntable to play, play previous/next and pause the music.
- To unpair Bluetooth® connection , press and hold the ►|| button



The operational range between this turntable and a Bluetooth® device is approximately 10 metres (without any object between the Bluetooth® enabled device and the unit). Any obstacle between the devices can reduce the operational range.

Before you connect a Bluetooth® enabled device to this unit, ensure you know the device's capabilities. Compatibility with all Bluetooth® devices is not guaranteed.

If the signal strength is weak, your Bluetooth® receiver may disconnect, but it will re-enter pairing mode automatically.



If a mobile phone on which you are playing music receives a call, the music will be interrupted. The phone call audio however is not played via the speakers. Once you end the call, the devices are connected to each other again and playback resumes.

Your device will also be disconnected when your device is moved beyond the operational range. If you want to reconnect your device, place it within the operational range.

If the connection is lost, follow the instructions (left) to pair your device to the player again.

Troubleshooting

If you have problems with the turntable, check below for advice. If you don't find a solution here, contact After Sales Support on 1300 886 649.

Problem	Solution
No power	<ul style="list-style-type: none">• Ensure that the power adaptor is properly connected.• Ensure that there is power at the AC outlet.
No sound	<ul style="list-style-type: none">• Check that the turntable is in the correct mode. If in Bluetooth® mode, check the Bluetooth® source device to make sure that it's not muted or stopped playing.• Check that the volume of the external amplifier is not muted/increase the volume.
The vinyl record will not play	<ul style="list-style-type: none">• Check that it is in the correct mode• Make sure you have selected the correct speed (33, 45, 78rpm).• Check whether the vinyl has already played to the end.
USB can not playback	<ul style="list-style-type: none">• Check that it is in the correct mode.• Check that the music file format is mp3.

For Technical and Warranty Support

1300 886 649

monster@tempo.org

monsterproducts.com.au

Distributed by Tempo (Aust) Pty Ltd,

PO Box 132, Frenchs Forest NSW 1640



Specifications

Power Adaptor Input	AC 100-240V, 50/60Hz 0.2A Max.	
Power Adaptor Output	DC 12V/0.2A	
Dimensions (Turntable)	430 x 140 x 334mm (W x H x D)	
Stylus Cartridge	Audio Technica ATN3600	
USB	Max 32GB	
Supported Formats	mp3	
Vinyl Records	Speed	Supports playback speed 33 / 45 / 78 RPM
	Record size support	7" = 17.7cm 10" = 25.5cm SP 12" = 30cm LP
Net Weight	4.27kg	
Gross Weight	11.1kg	

Compliance and Responsible Disposal



Packaging

The packaging of your product has been selected from environmentally friendly materials and can usually be recycled. Please ensure these are disposed of correctly. Plastic wrapping can be a suffocation hazard for babies and young children, please ensure all packaging materials are out of reach and are safely disposed of. Please recycle these materials rather than throwing them away.

Compliance

This product complies with the Australian Safety Standard AS/NZS 62368.1 to ensure the safety of the product.

Product

At the end of its working life, do not throw this product out with your household rubbish. An environmentally friendly method of disposal will ensure that valuable raw materials can be recycled. Electrical and electronic items contain materials and substances which, if handled or disposed of incorrectly, could potentially be hazardous to the environment and human health.



 **MONSTER**®
Always Lead. Never Follow.™